

SMS-51-L-SFT-FX-111



---

.....	3
.....	4
.....	4
.....	5
.....	6
.....	7
.....	7
.....	8
.....	11
.....	11
.....	12
.....	13
.....	13
.....	14
.....	15
.....	15
.....	16
.....	16
.....	17
.....	18
.....	19
.....	20

---

000	Oct 27, 2017	All Page	Make specification
-----	--------------	----------	--------------------



	①	②	③	④	⑤	⑥
①						
②						
③						~ 2483)
④						









※

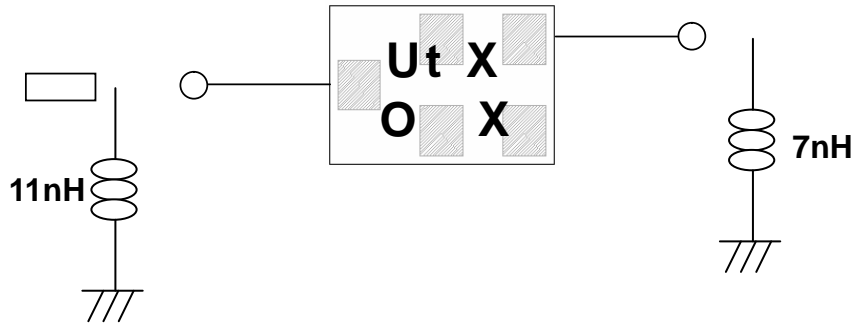


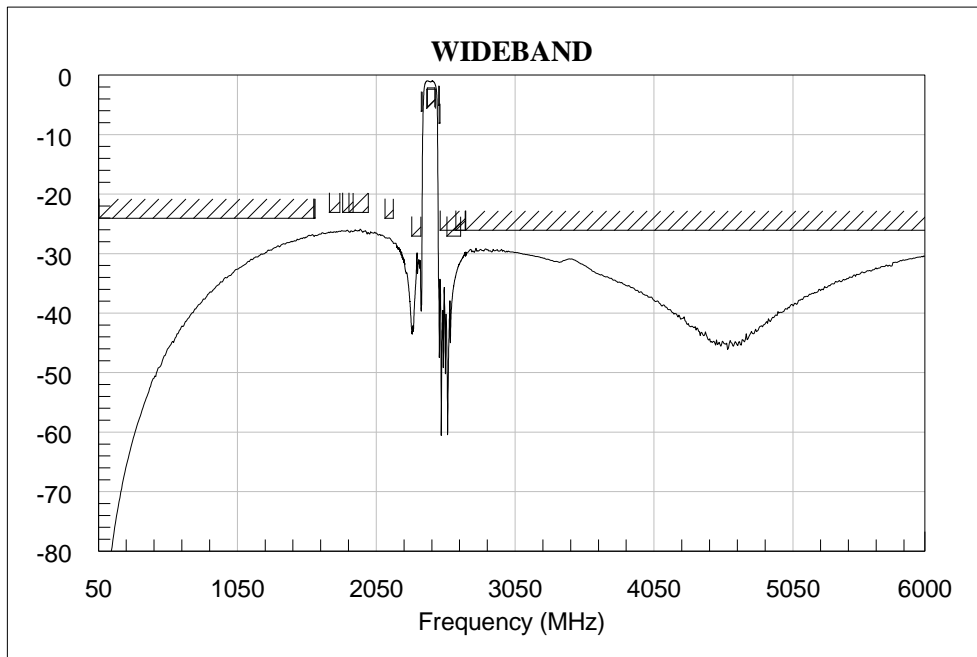
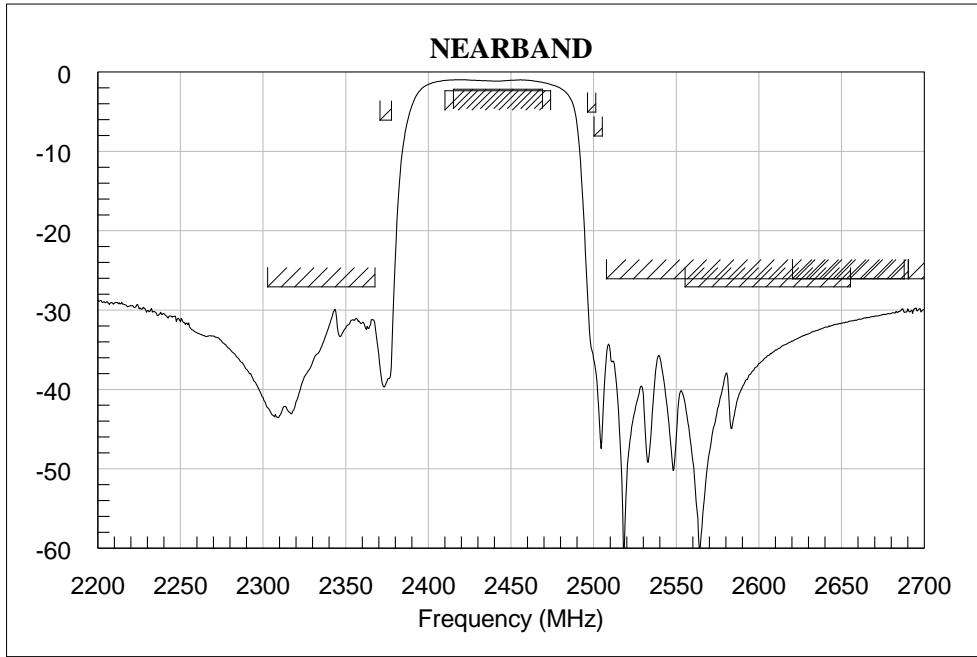
	—	°C	
	—	°C	

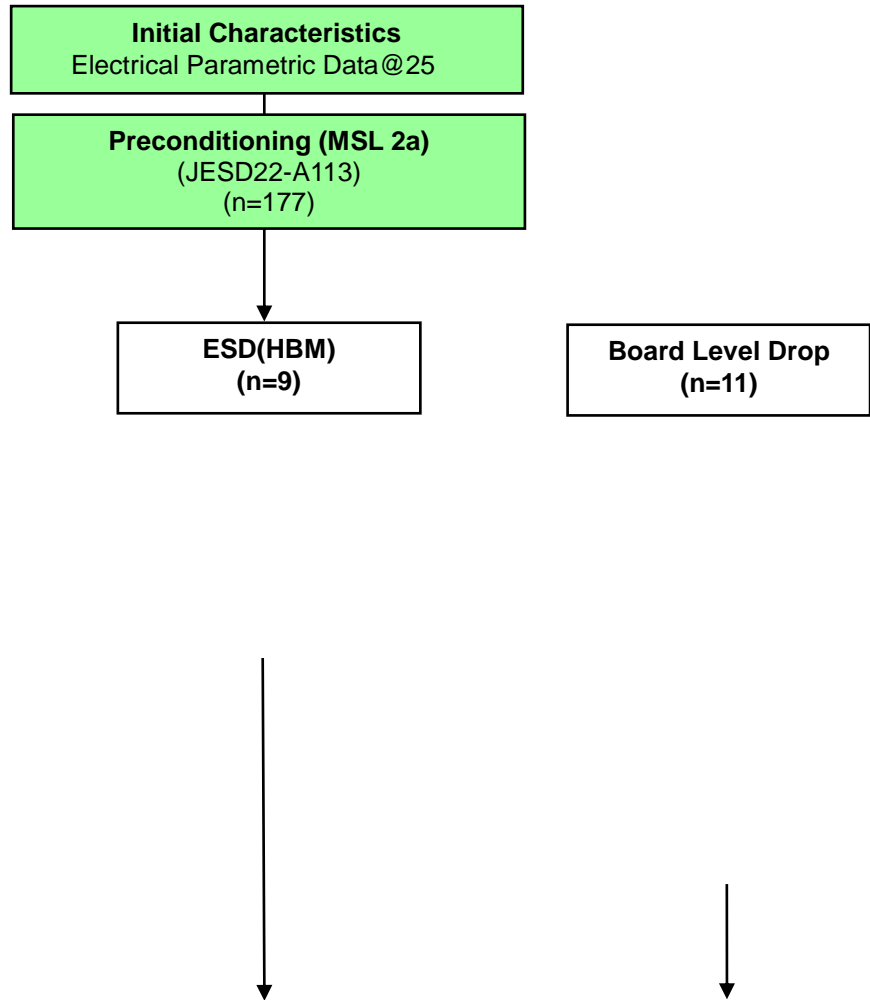


I	Item	FREQUENCY RANGE [MHz]	UNIT	SPECIFICATION	°C Note
---	------	--------------------------	------	---------------	------------



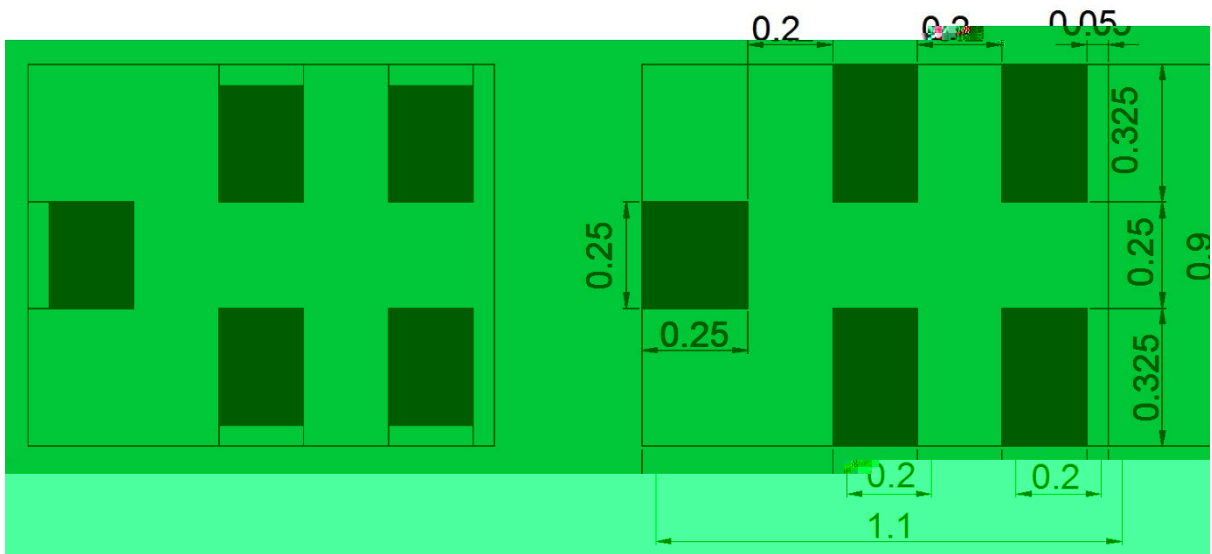
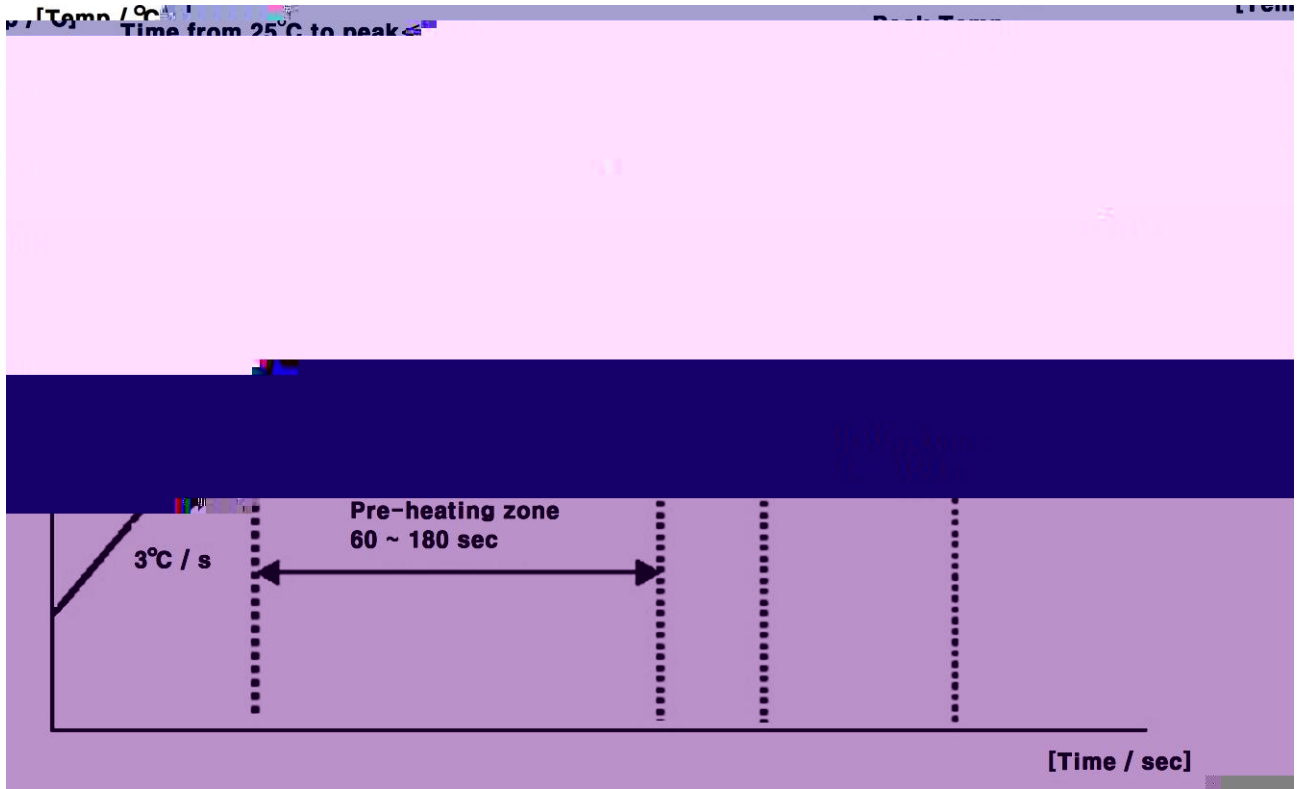




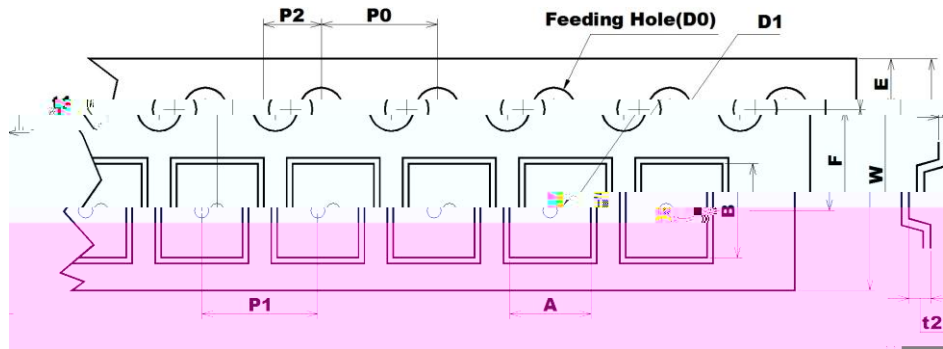


		°C	

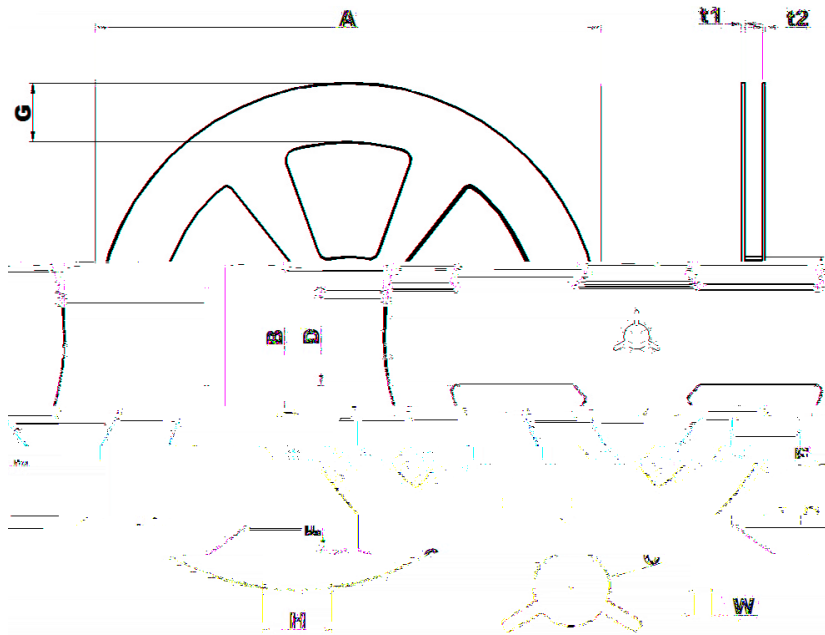


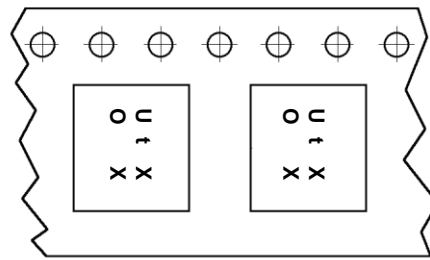
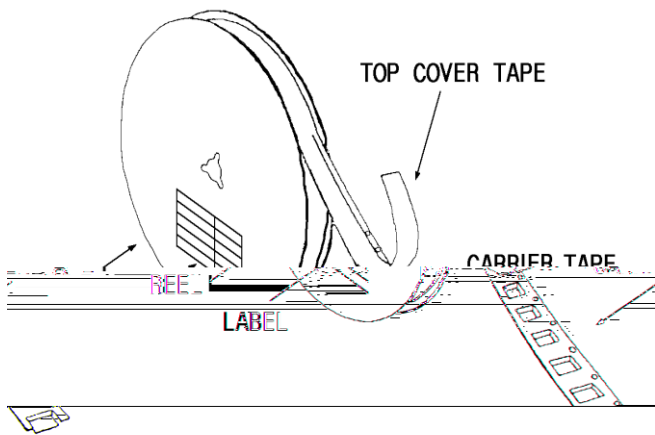




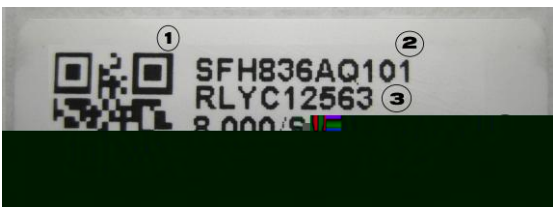
A	B	D0	D1	E	F	P0	P1	P2	t1	t2	W
1.08	1.23	Ø1.50	Ø0.50	1.75	3.50	4.00	4.00	2.00	0.23	0.70	8.00
0.05	0.05	0.10	0.01	0.10	0.05	0.05	0.05	0.05	0.05	0.05	0.30
0.05	0.05	0.00		0.10	0.05	0.05	0.05	0.05	0.05	0.05	0.10



A	B	C	D	E	F	G	H	t1	t2	W
Ø258.0	Ø81.0	Ø13.0	50.0	2.2	7.0	30.0	35.0	1.8	1.5	9.0
+1.0	+1.0	+0.5	+0.8	+0.3	+0.5	+0.8	+1.0	+0.5	+0.5	+1.0
-0.5	-1.0	-0.5	-0.8	-0.3	-0.5	-0.8	-1.0	-0.5	-0.5	-0.5

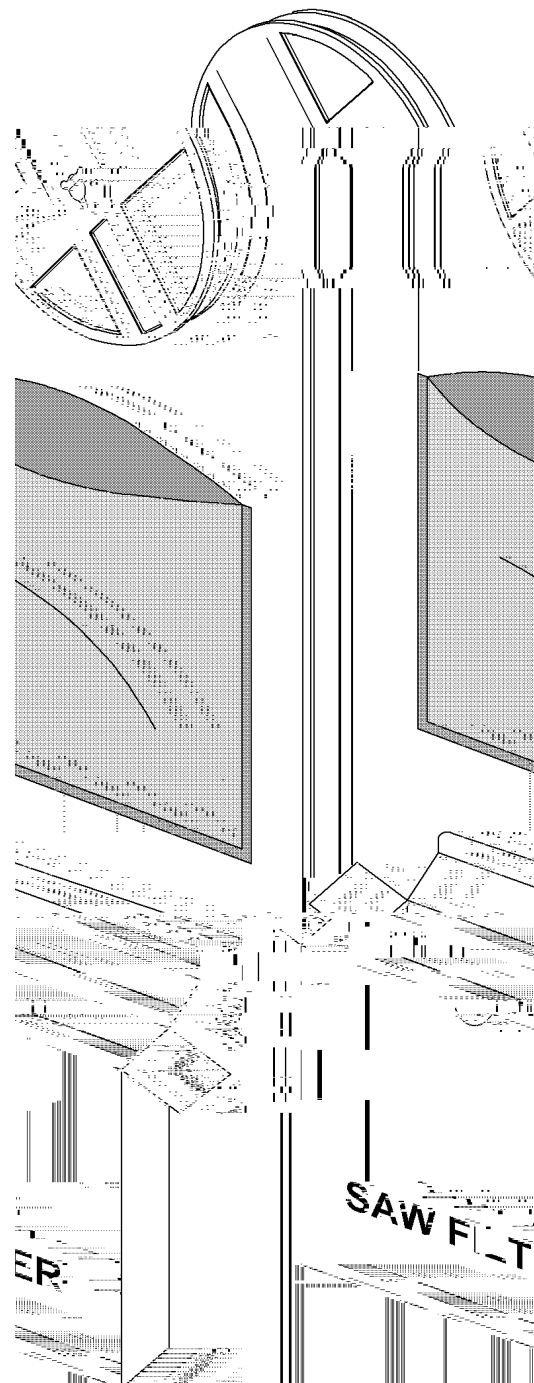
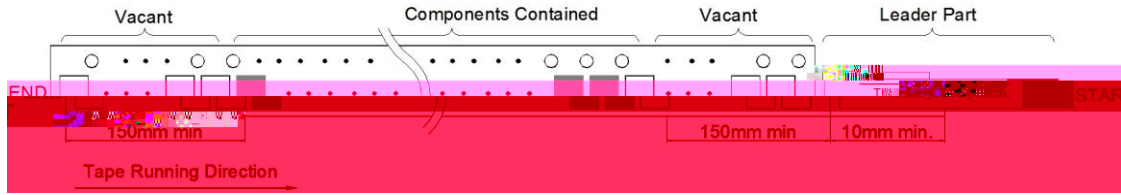


Tape Running Direction →

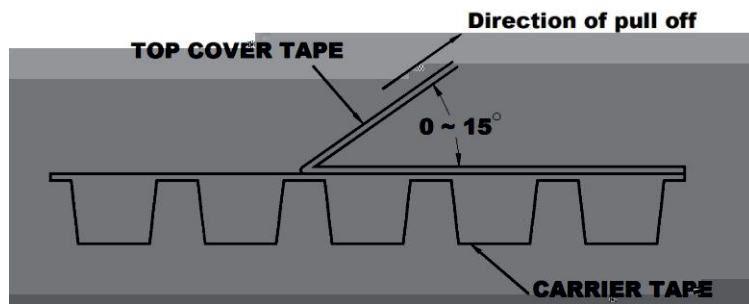





1-3-3. Leader part and vacant position specifications.









Test Report No. F690101/LF-CTSAYAA17-25974

Issued Date : 2017. 05. 10

Page 1 of 8

WISOL CO., LTD.  
28-40, Gajangsaneopdong-ro



Sample City : Seoul  
Korea

Item No	1	Swirl sample (S) Wash Machine in this kind of fabric style
SGS File No		AYAA17050724
Prod. Name		SAMSUNG
Lot No / Ref No		NA
Layer(s)		SAMSUNG
Issued Date		2017-05-02
Test Period		2017-05-02 to 2017-05-02
Test Results		For further details, please refer to the following page.

SGS Korea Co., Ltd.

*Jeff Jang*

Jeff Jang / Chemical Lab Mgr

SGS Korea Co., Ltd. Seoul, Korea

www.sgs.com





**Test Report** No. F690101/LF-CTSAYAA17-25974

Issued Date : 2017. 05. 10

Page 3 of 8

Sample No. : AYAA17-25974.001

Client :   
 Order No. :   
 Material :

Unit	Test Method	MDL	Integrity	Test Items
mg/kg	GB 18318-2003 (Reference Method)	<MDL		Chromium(VI) (CrVI)
mg/kg	GB 18318-2003 (Reference Method)	<MDL		Chromium(VI) (CrVI)
mg/kg	GB 18318-2003 (Reference Method)	<MDL		Chromium(VI) (CrVI)
mg/kg	GB 18318-2003 (Reference Method)	<MDL		Chromium(VI) (CrVI)
mg/kg	GB 18318-2003 (Reference Method)	<MDL		Chromium(VI) (CrVI)

**Halogen Content**

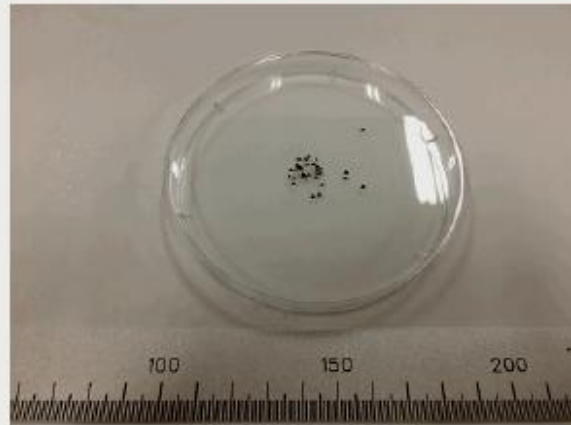
Test Item	Unit	Value	Standard
Chlorine (Cl)	mg/kg	6.9	≤10
Bromine (Br)	mg/kg	0.1	≤1

NOTE: (1) N.D. = Not detected (<MDL)  
 (2) mg/kg = ppm  
 (3) MDL = Method Detection Limit  
 (4) - = No regulation  
 (5) Negative = Undetectable / Positive = Detectable  
 (6) M = Qualitative analysis (No Unit)  
 (7) + = The sample is positive for CrVI if the CrVI concentration is greater than 0.13 µg/cm<sup>2</sup>—The sample coating is considered to contain CrVI

This document is issued by the Company subject to its General Conditions of Service which are available on request or accessible at [www.sgs.com](http://www.sgs.com) and, for electronic format documents, subject to Terms and Conditions for Electronic Documents at [www.sgs.com/Products/Services/Quality/Quality%20Management/Information%20Management/Information%20Management.htm](http://www.sgs.com/Products/Services/Quality/Quality%20Management/Information%20Management/Information%20Management.htm). Any order of this document implies that the information is the property of the Company and that the information is not to be disseminated outside the Company. The Company is not responsible for the information contained in this document if it is reproduced or modified without the prior written consent of the Company. Any unauthorized alteration, copy or distribution of the content or appearance of this document is prohibited and should be reported to the nearest SGS office.

SGS Version 3  
 SGS Group Logo  
 SGS Group Logo  
 Member of the SGS Group

Picture of Sample as Received:



**AYAA17-25974.001**

This document is issued by the Company subject to its General Conditions of Service printed overleaf, available on request or accessible at <http://www.sgs.com/TermsandConditions.aspx> and, for electronic format documents, subject to Terms and Conditions for Electronic Documents. Attention is drawn to the limitation of liability, indemnification and jurisdiction issues defined therein.

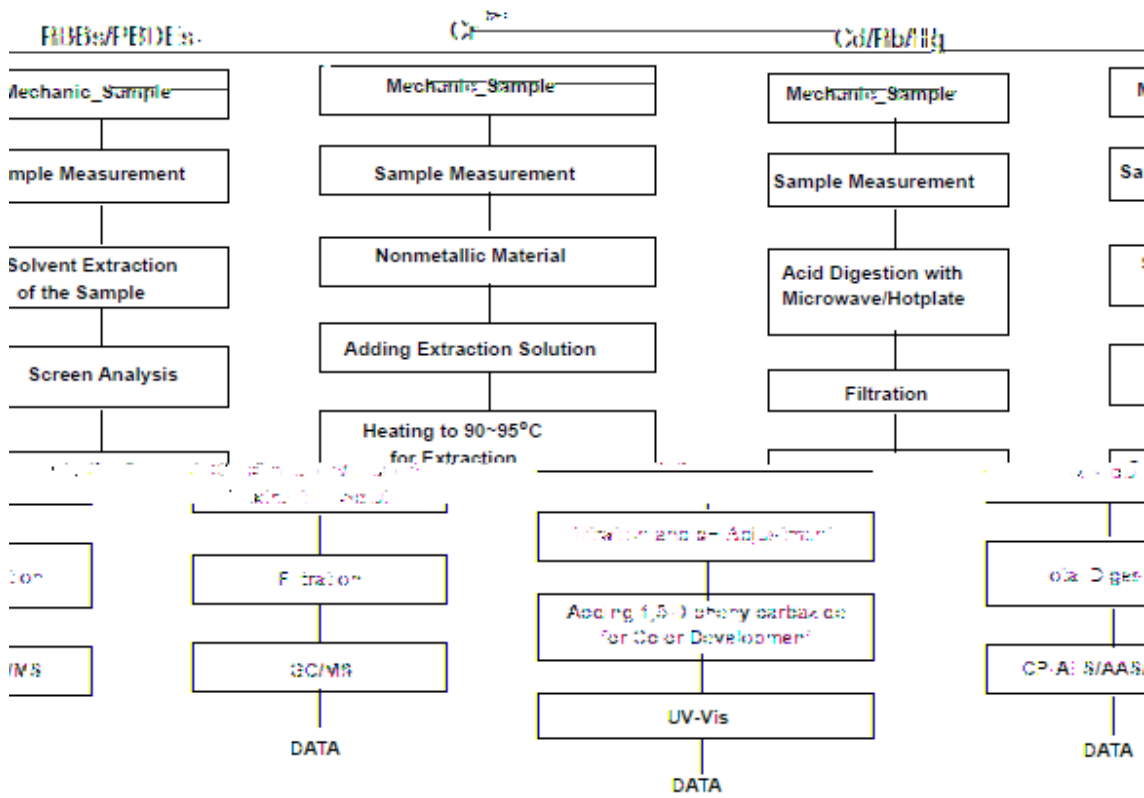


Test Report No. F690101/LF-CTSAYAA17-25974

Issued Date : 2017. 05. 10

Page 5 of 8

Testing Flow Chart for RoHS: Cd/Pb/Hg/Cr<sup>6+</sup>/DBP & DBPE Testing



The samples were dissolved totally by pre-conditioning method according to above flow chart for Cd,Pb,Hg.  
 Analyst: Gilsae Yi

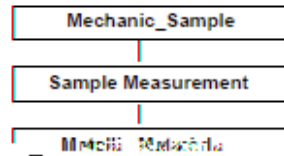
The samples were analyzed by Section Chief

any subject to its General Conditions of Service printed overleaf, available on request or accessible at <http://www.sgs.com/en/Products/Services/Testing-and-Inspection>. This document is issued by the Company and, for electronic format documents, subject to Terms and Conditions for Electronic Documents at [www.sgs.com/terms\\_e-document.html](http://www.sgs.com/terms_e-document.html) and [http://www.sgs.com/terms\\_e-document.html](http://www.sgs.com/terms_e-document.html). Attention is drawn to the limitation of liability, indemnification and jurisdiction issues defined therein. Any holder of this document is advised that information contained hereon reflects the Company's findings at the time of its intervention only and within the limits of Client's instructions, if any. The Company's sole responsibility is to its Client and this document does not exonerate parties to a transaction from exercising all their rights and obligations under the transaction documents. This document cannot be reproduced except in full, without prior written approval of the Company. Any unauthorized alteration, forgery or falsification of the content or appearance of this document is unlawful and offenders may be prosecuted to the fullest extent of the law. Unless otherwise stated the results shown in this test report refer only to the sample(s).



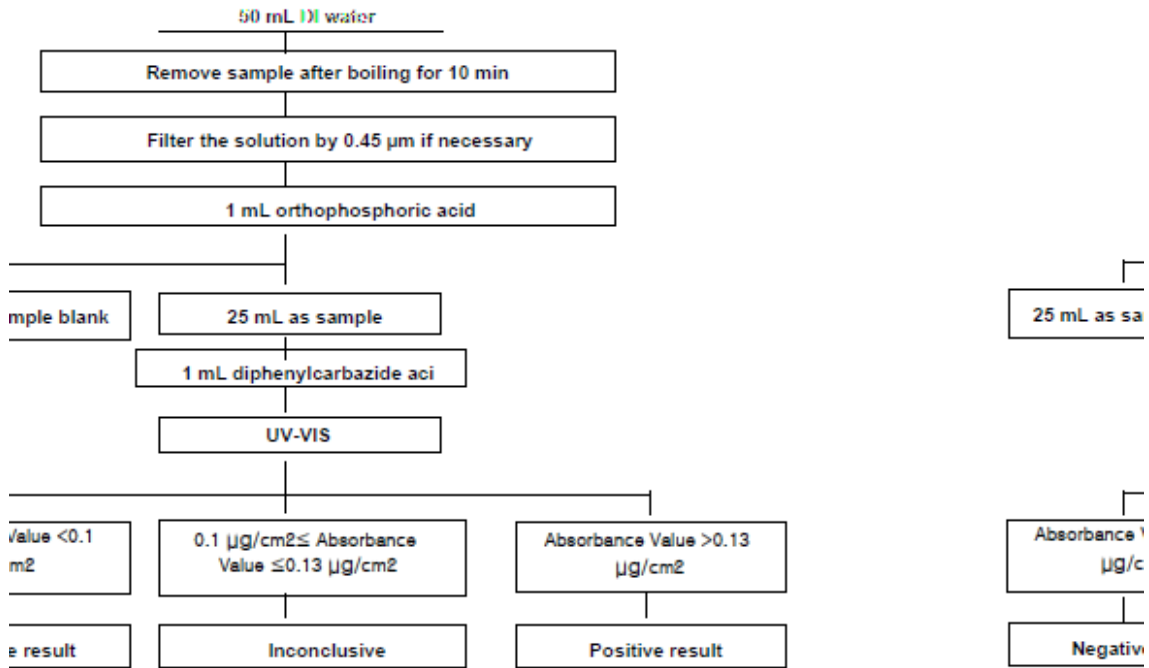


$Cr^{6+}$

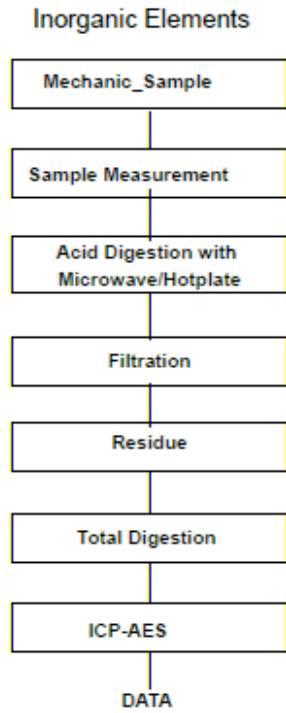


Boiling water extraction

(50 ± 5) cm<sup>2</sup>



**Flow Chart for Inorganic Elements Testing**



Major Inorganic Heavy Metals	Antimony(Sb) , Beryllium(Be) , Phosphorus(P) , Arsenic(As) etc.
------------------------------	---